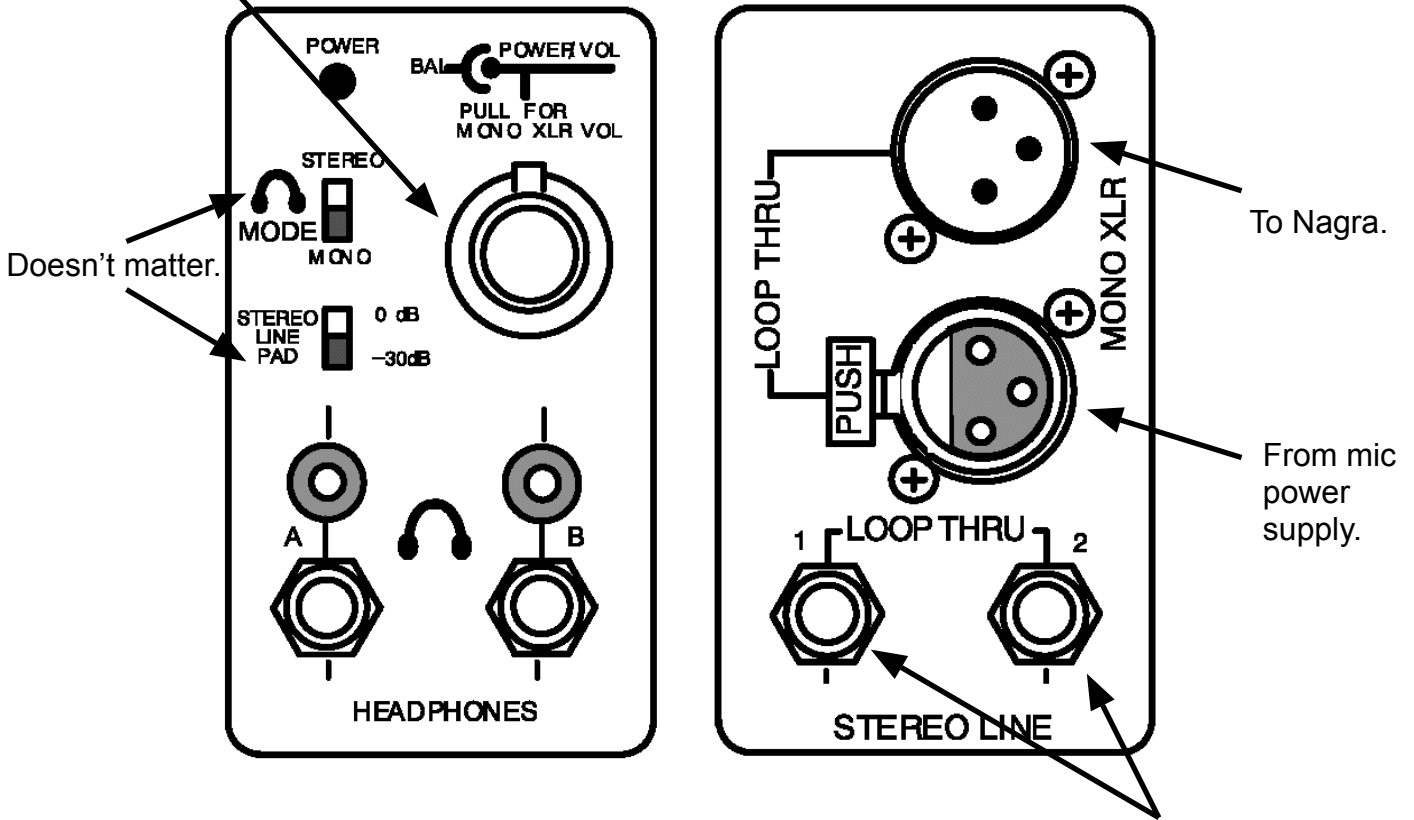
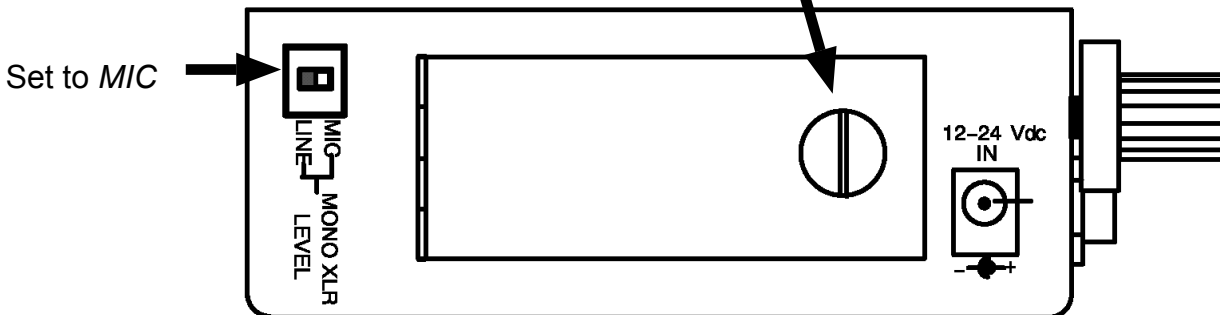


Sure FP22 Headphone Amplifier

1. Rotate the inner knob just a little until the power light comes on.
2. Pull the inner knob out.
3. Rotate the inner knob about half a turn until it clicks into the center stop.
4. Push the inner knob back in.
5. CAREFULLY turn the inner knob up until your headphone level is to your liking.
6. Use the outer knob to adjust the left-ear / right-ear balance.



One 9 volt battery.



HEADPHONE AMP CONNECTION PLOT

