

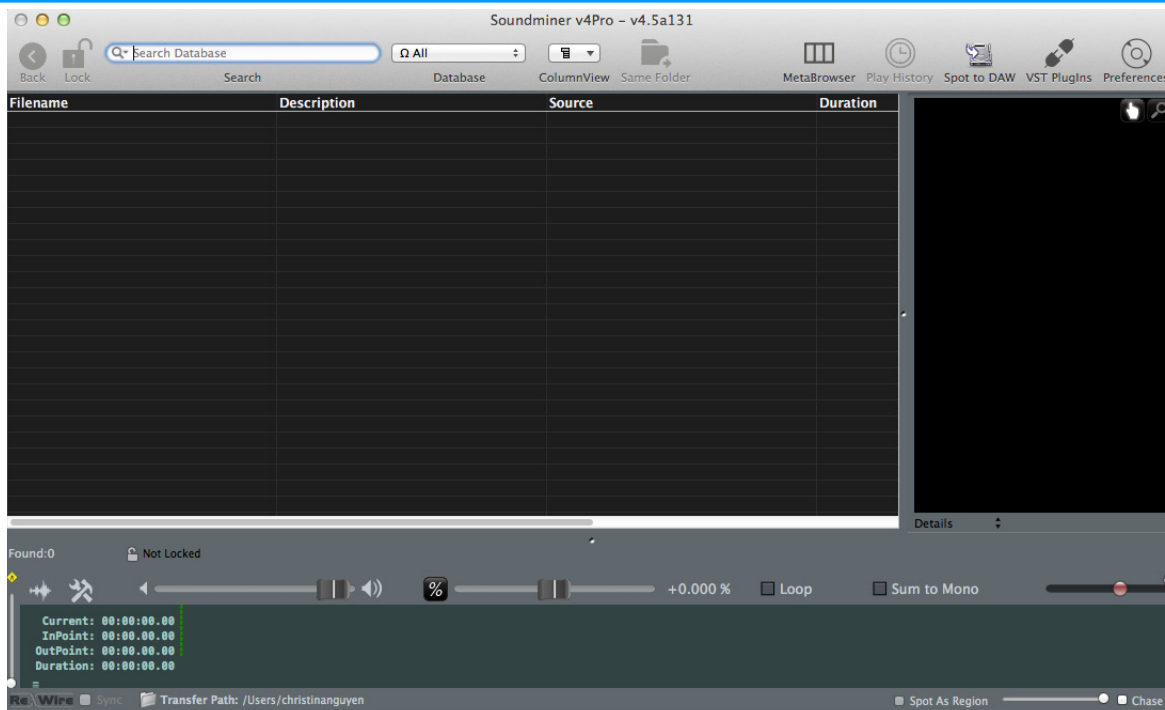
So you're looking for some sound effects for your movie...Here is an introduction to using Soundminer v4Pro v4.5, which will help you navigate our sound effects library and transfer mono and stereo versions of effects you would like to use.

Logging into Soundminer v4Pro v4.5

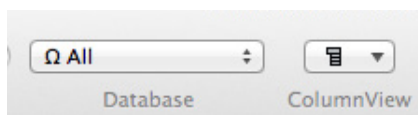
1. Launch Soundminer
2. The Directory Authentication window will appear. In the user name field enter: "smuser" and in the password field enter: "letmein". Click Authenticate to Login.



Soundminer Setup



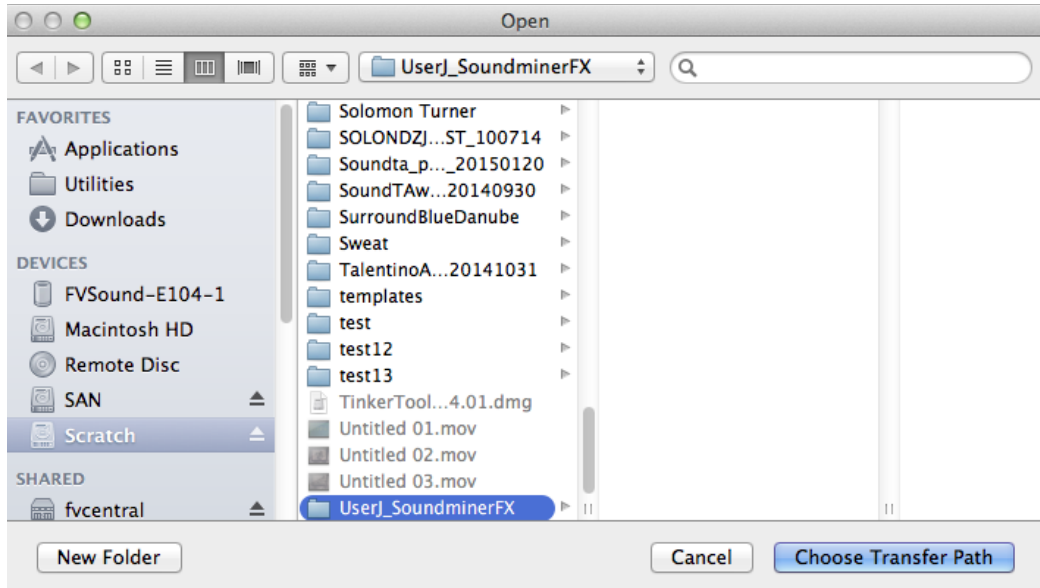
1. To ensure that you are searching the entire sound effects library select Ω All from the Database pulldown menu.



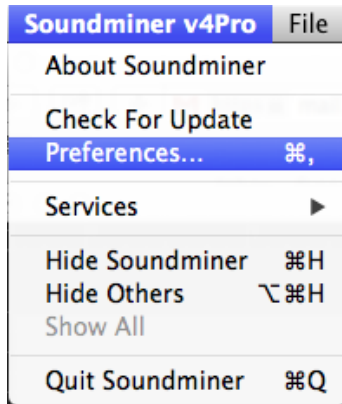
2. Set the transfer path by clicking the folder icon at the bottom of the Soundminer window. A file browser will open.

Transfer Path: /Volumes/Scratch/UserJ_SoundminerFX

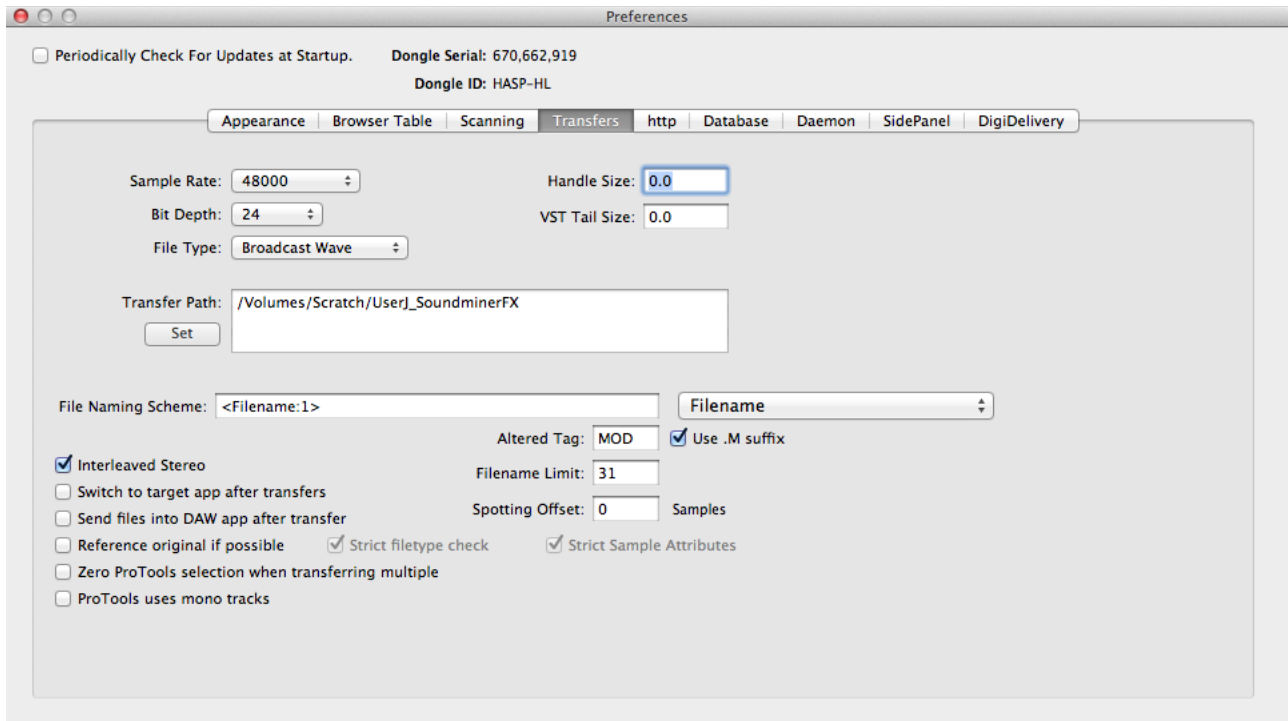
3. Create a new folder using your name. This is where Soundminer will send your selected sound effects.



4. Set Soundminer preferences. Go to: Soundminer v4Pro > Preferences.



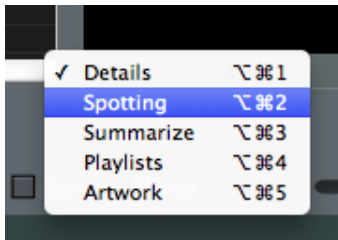
- In Preferences Window Select the Transfers Tab. Set Sample Rate to: 48000, Bit Depth to: 24, and File type to: Broadcast Wave. You may also see that transfer path has been set correctly in this tab. At the bottom of the window CHECK Interleaved Stereo and UNCHECK Switch to target app after transfers and Send files into DAW app after transfer.



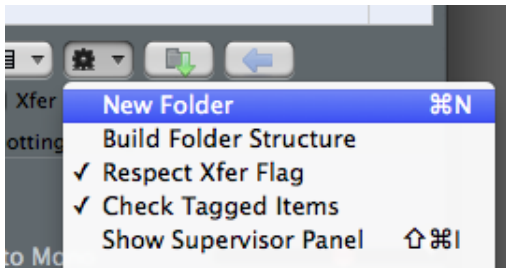
- It is a good idea to review these settings prior to transfer.

Working with Soundminer

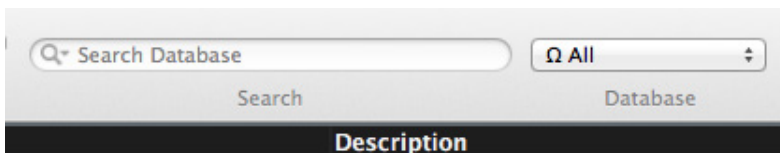
- Setup up the necessary folders to work within Soundminer. Click the drop down menu set to details and select Spotting.



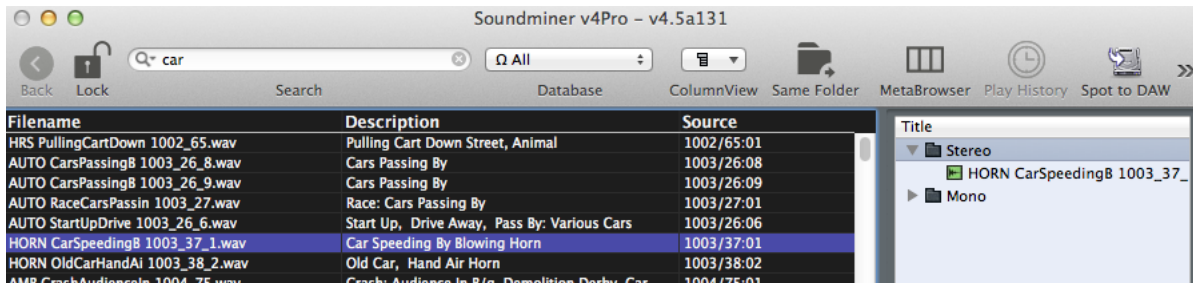
- Create two new folders by going to the "Gear" pull down menu. Label one Mono and the other Stereo.



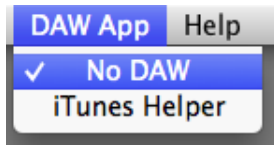
- Search for sound effects by entering queries in the Search Database field at the top of the window. Associated sound effects will appear.



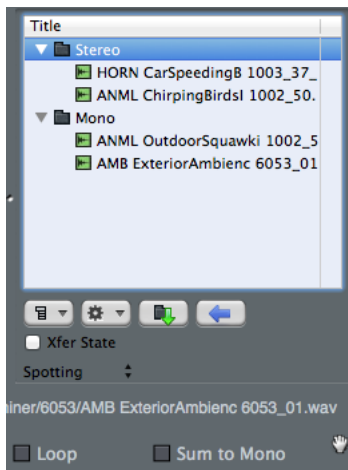
- When you find the appropriate sound effect, highlight either the Mono or Stereo folder in the spotting window and hit the “T” key. This will tag the sound effect and it will appear in your spotting folder.



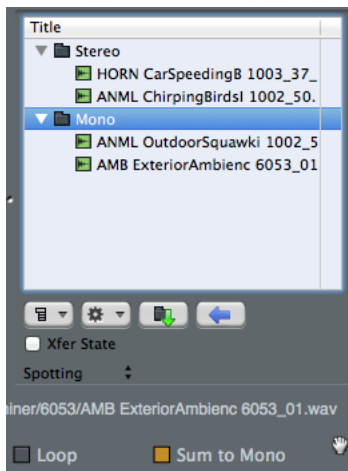
- Before transferring the files, go to: DAW App and select No DAW.



- When you are ready to transfer the tagged files from the sound effects library highlight your stereo folder in the spotting window and click the green arrow button. This will send the files to the transfer folder you set. Be sure at the Sum to Mono button is not selected.



- Transfer your mono files by highlighting the mono folder. Click the sum to mono button and then transfer the files with the green arrow button.



- Now you have sound effects.